

Bangladesh

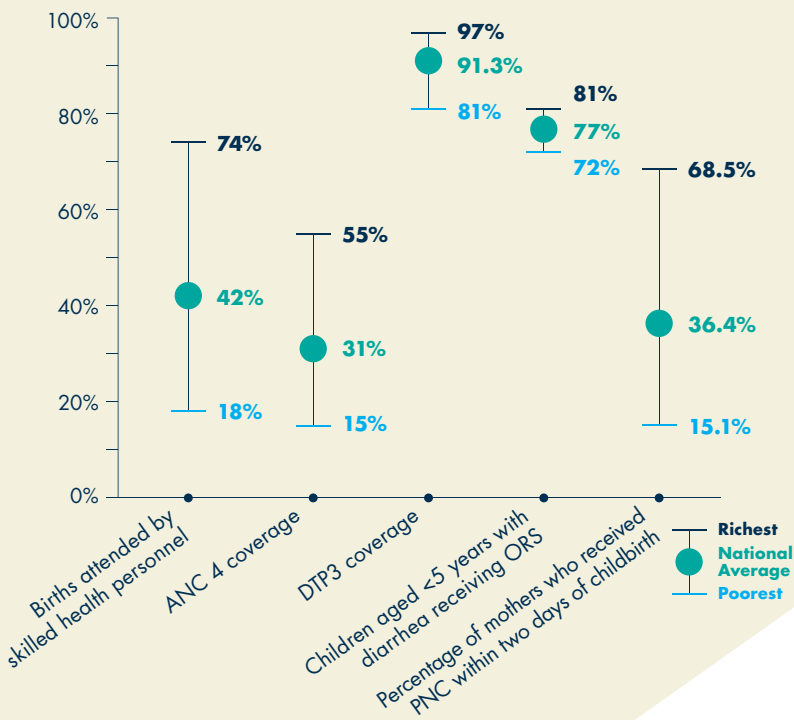
RMNCAH-N Data

CORE IMPACT INDICATORS

Maternal mortality ratio 194 per 100,000 live births	Under-five mortality ratio 46 per 1,000 live births	Percent of births <24 months after the preceding birth 11.3%	Moderate to severe wasting among children under 5 years of age 14%
Neonatal mortality ratio 28 per 1,000 live births	Adolescent birth rate 113 per 1,000 women	Stunting among children under 5 years of age 36%	

COVERAGE INDICATORS***

People living with HIV receiving ART 16%
Coverage of pregnant women who receive ARV for PMTCT 17%
Children aged <5 years with pneumonia symptoms taken to a healthcare provider 42%
Modern contraceptive prevalence rate 54.1%
Girls Secondary School Retention Rate 66% Grade 10 46% Grade 12



Investment Case Priorities

- Strengthen governance and stewardship of the public and private health sectors.
- Undertake institutional development for improved performance at all levels of the system.
- Provide sustainable financing for equitable access to health care and accelerated progress towards universal health coverage.
- Strengthen the capacity of the Ministry of Health and Family Welfare's core health systems (Financial Management, Procurement, Infrastructure development).
- Establish a high-quality health workforce available to all through public and private health service providers.
- Improve health measurement and accountability mechanisms and build a robust evidence base for decision making.
- Improve equitable access to and utilization of quality health, nutrition, and family planning services.
- Promote healthy lifestyle choices and a healthy environment.
- Promote keeping girls in school and reducing drop-out rates among girls in secondary schools.

Health Financing Indicators

CORE HEALTH FINANCING IMPACT INDICATORS

Health expenditure per capita financed from domestic sources 4.68	Ratio of government health expenditure to total government expenditures 3.37%	Percent of current health expenditures on primary/outpatient health care Not available	Incidence of catastrophic and impoverishing health expenditures 25% catastrophic 8.1% impoverishing
--	--	---	---

OUTPUT INDICATORS

Share of health in total government budget 5.2%	Identified options for strengthening domestic resource mobilization Yes	Taken actions to support domestic resource mobilization Yes	Share of external funding for health that is pooled or on budget 26.78%
Monitoring of catastrophic and impoverishing health expenditure with data less than three years old No	Implemented strategies to reduce key drivers of inefficiency Yes	Implemented reforms to address identified drivers of financial protection (especially related to RMNCAH-N) Yes	
Country has: implemented or updated a resource mapping exercise No	Identified drivers of limited financial protection (especially in relation to RMNCAH-N services) No		

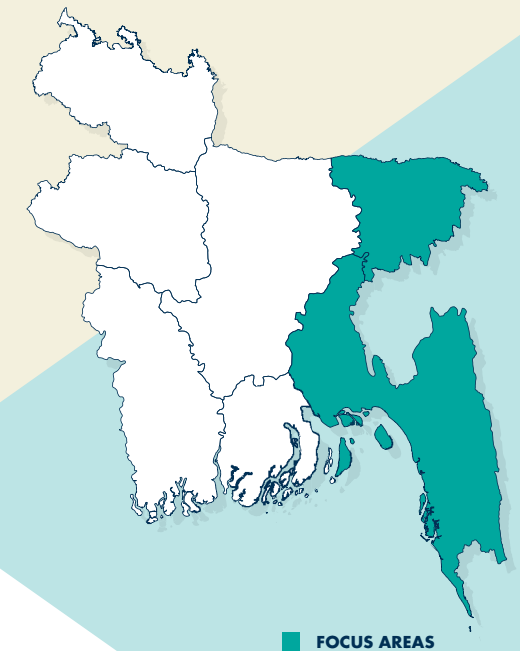
EFFICIENCY

DTP3 dropout rate 5.7%	ANC dropout rate 51%
Health budget execution rate 90%	

World Bank-funded Project (IDA/IBRD/GFF)

COUNTRY	Bangladesh (Health)	Bangladesh (Education)
BOARD DATE	7/28/17	12/18/17
GFF APPROVED AMOUNT	\$15M	\$10M
IDA AMOUNT	\$500M	\$510M

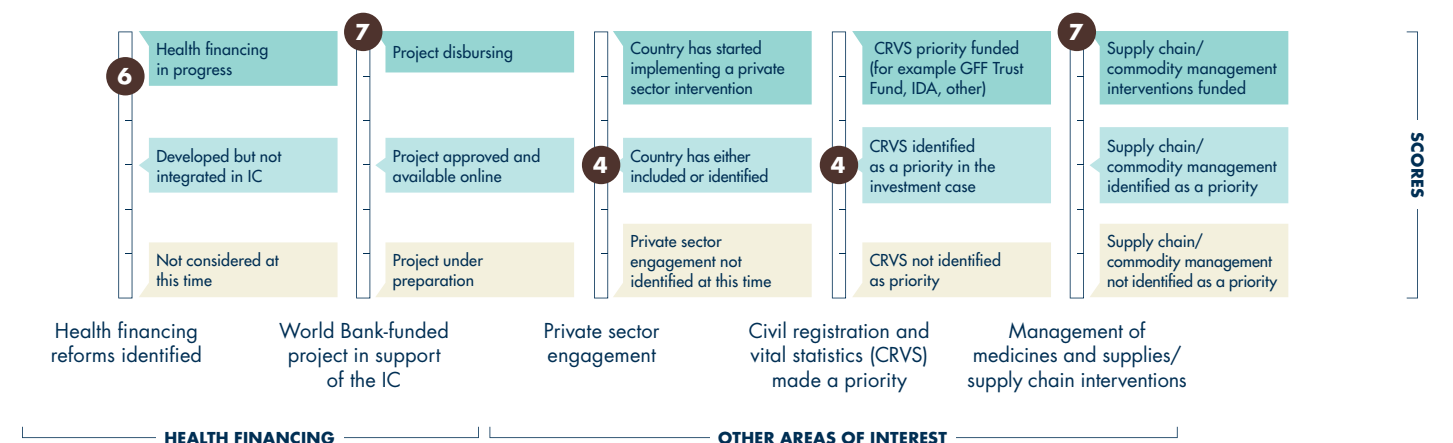
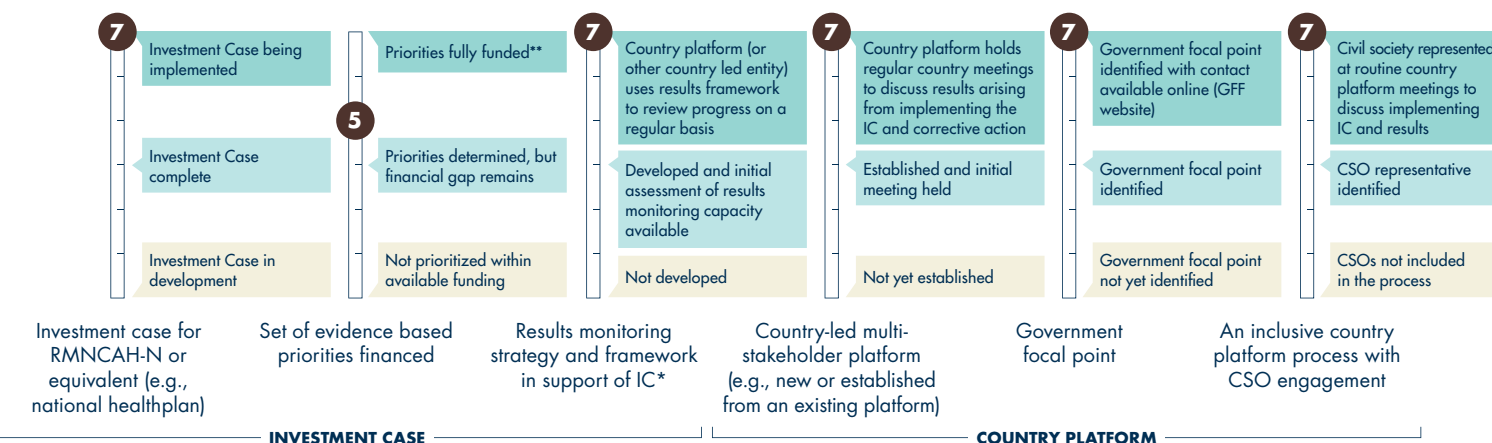
Geographic Focus Areas



Resource Mapping

The GFF is supporting Bangladesh in aligning financing and technical support with a focus on improving RMNCAH-N outcomes. Through support to the government's programs in both the health, nutrition and population and the education sectors, the GFF is catalyzing the coordinated impact of international financing totaling more than US\$1 billion and influencing domestic government spending of US\$30 billion in the two sectors over five years. The Health Sector Support Project is financed by US\$15 million from the GFF, US\$500 million from IDA, US\$23 million from Sweden, US\$13 million from the Netherlands, US\$60 million from the United Kingdom (and proposed co-financing from other partners). The Health Sector Support Project contributes to the government's Fourth Health, Nutrition and Population Sector Program through a results-based strategy. The project supports development of health system governance, management and service delivery capacities, implementation of an Essential Services Package, and a focus on lagging regions.

Monitoring the Country-led Process



*Both included in the IC document or a separate document **Meaning that funding was allocated, disbursed and released - payment done ***ANC4 = four antenatal care visits; ART = antiretroviral therapy; ARV = antiretroviral; DTP3 = vaccination for Diphtheria, Tetanus, and Pertussis; ORS = oral rehydration solution; PMTCT = prevention of mother-to-child transmission; PNC = postnatal care.